

Summit East

Summit East

Trail Beginning: 47.3754-113.6199. 16 Miles north of Seeley Lake Postoffice in MT 83.

Trail Length: 3 ¾ mile loop. Dirt road at NW corner of loop connects to Pierce Lake Rd.

Season of Use: Yearlong

Usage Rate: Very light

Difficulty: Easy

Reference Maps: Lolo National Forest Visitor Map – Seeley Lake Ranger District

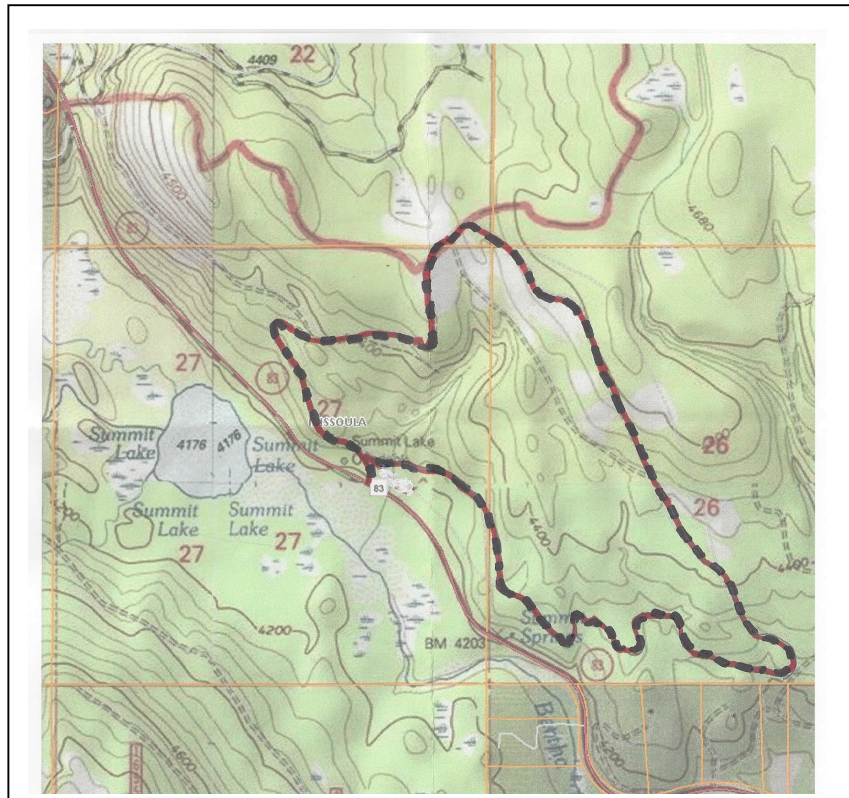
Map Location: Section 27, T.19N., R.15W.

NARRATIVE

Non motorized Hike r bike. The loop and power line corridor is good x-c ski or snowshoe. Clockwise loop gains 300-ft elevation within a little over a mile, then generally undulating up and down back to beginning. Gravel Unmaintained logging road with occasional rocks, ruts and woody debris. Some grassy/forbs segments.

Peekaboo views of Mission and Swan Mountains. Good foreground and middle ground visibility.

A prime area for wildlife connectivity between Mission Mountain and Bob Marshall Wilderness.



7/20